



Technical Specification



B Series Central Granulators

Tel (508) 399-3001 • Fax (508) 399-6653 • www.cumberland-plastics.com • Bulletin: CG6-530 • Effective: September 27, 2002 • Supersedes: New

B Series Central Granulators

Application:

The B Series Granulators are heavy-duty, high capacity granulators for central reclamation. B Series granulators are ideal for pipe, purgings, x-ray film, post-consumer baled bottles, film, and fibers. B Series Granulators feature High Shear Rotors,

Features:

| Model | Throat Size | Cutting Circle Diameter | Throughput | Approximate Weight |
|-------|---------------------------|-------------------------|-------------------------|------------------------|
| 24B | 15" x 24" (381 x 610 mm) | 14" (356 mm) | 1000 lbs./hr. (454 kg) | 6000 lbs. (2722 kg) |
| 28B | 18" x 28" (457 x 711 mm) | 16" (406 mm) | 1800 lbs./hr. (816 kg) | 7000 lbs. (3175 kg) |
| 37B | 18" x 37" (457 x 940 mm) | 16" (406 mm) | 2500 lbs./hr. (1136 kg) | 11,000 lbs. (5000 kg) |
| 50B | 20" x 50" (510 x 1270 mm) | 18" (457 mm) | 3500 lbs./hr. (1591 kg) | 15,000 lbs. (6818 kg) |
| 62B | 20" x 62" (510 x 1575 mm) | 18" (457 mm) | 4500 lbs./hr. (2045 kg) | 22,000 lbs. (10000 kg) |
| 72B | 20" x 72" (510 x 1830 mm) | 18" (457 mm) | 5000 lbs./hr. (2272 kg) | 26,000 lbs. (11818 kg) |

Benefits:

- Heavy-duty construction allows granulator to handle heavier loads.
- Internal surfaces machined for ease of clean-out and material flow.
- Optimum cutting efficiency, with low power consumption.
- The rotor knives are bolted to the rotor with high-strength alloy steel bolts.
- Heavy-duty, spherical roller bearings.
- Heavy duty overall construction: main frame, rotor, downstroke shield, steel plate bedknife blocks & belts. Larger, spherical roller bearings and heavy-duty flywheel sheave.
- End removable screen.

B Series Specifications:

| | Standard | Standard Options |
|-----------------------|---------------------------------|--|
| Infeed | Conveyor feed | Tray and sheet feed, Tray and feed rolls, Pipe feed |
| Cutting Chamber | 2-bed knife | Hard facing, water cooling, air purge bearings |
| Rotor | Open 3-knife high-shear | 5-knife high-shear, 3-knife steep angle, 5-knife S/A, 7-knife S/A (62B and 72B only) |
| Rotor Knives | (3) HCHC | (5) HCHC, Steep angle, 55° |
| Bed Knives | (2) HCHC | Raised D/S |
| Screen | 3/8" N.H.T. | 1/4" and larger, H.T. |
| Drive Parts | V-belt | |
| Electrical Components | NEMA 12 with safety interlocks | |
| Controls | Customer supplied | 230, 460, or 575 volt, NEMA 12 |
| Labels | Safety/caution/operation labels | |
| Accessories | | Blower, Cyclone, Separator, Conveyor |

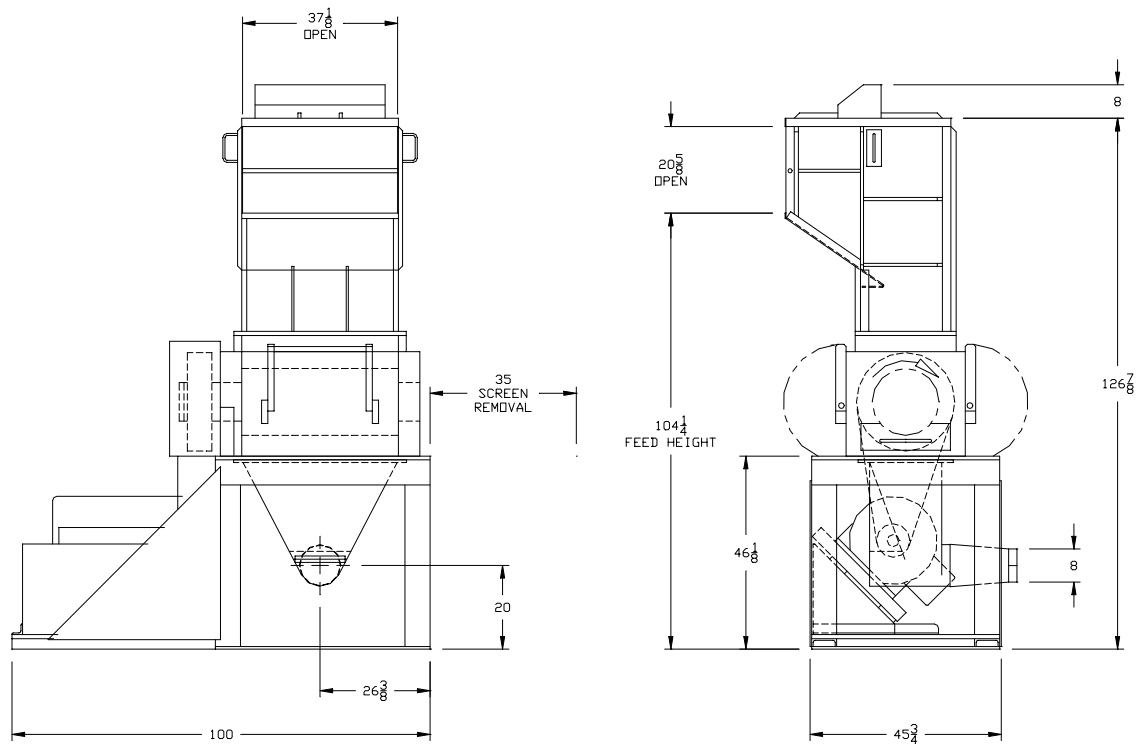
| Model | Base | | Discharge | | Motor | |
|-------|----------|------------------|--------------------|--------------------------|----------|-------------|
| | Standard | Std. Option | Standard | Std. Option | Standard | Std. Option |
| 37B | 37" Step | 22" Low Airveyor | 8" Airveyor Chute | Gaylord, 8-12" Airveyor | 100HP | 100-150HP |
| 50B | 37" Step | 22" Low Airveyor | 10" Airveyor Chute | Gaylord, 8-12" Airveyor | 150HP | 100-200HP |
| 62B | 37" Step | 31" Low Airveyor | 12" Airveyor Chute | Gaylord, 10-14" Airveyor | 200HP | 100-250HP |
| 72B | 37" Step | 31" Low Airveyor | 12" Airveyor Chute | Gaylord, 10-14" Airveyor | 200HP | 100-250HP |

— See Page 2 For B Series Drawings —

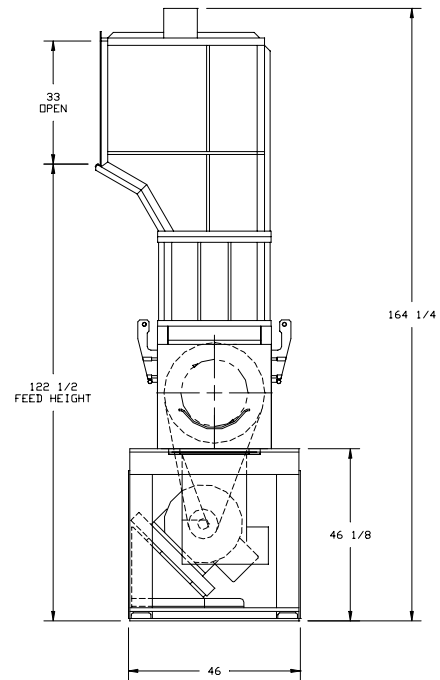
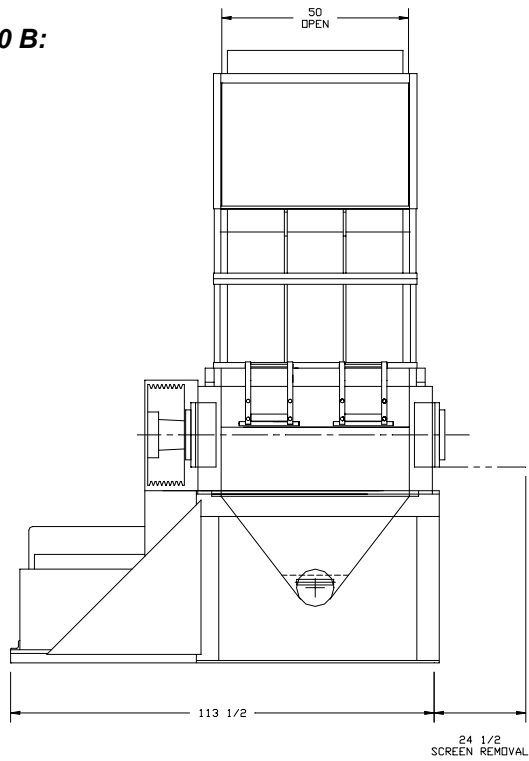


Cumberland B Series Central Granulators

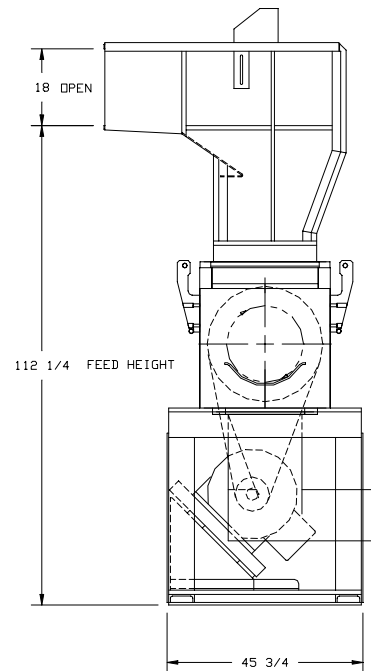
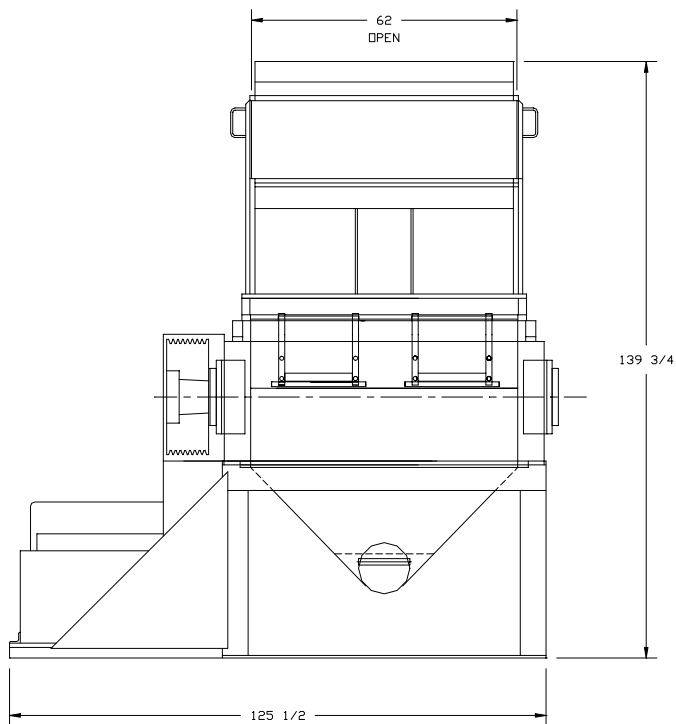
37 B:



50 B:



62B:



72B:

